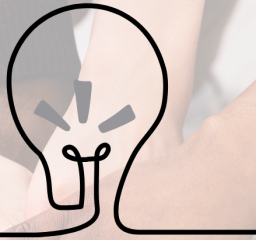




SPOTLIGHT

**ON ACCESS****NEWS THIS MONTH**

Feb.: Turner Syndrome Awareness Month  
 Feb.: Black History Month  
 Feb. 2-8, 2025: School Counseling Week  
 Feb. 10, 2025: International Epilepsy Day  
 Feb. 20, 2025: World Day of Social Justice

**UPCOMING PD**

Feb. 26, 2025 (2:30-3:30): Coordinators' Collaborative Meeting (Virtual)  
 Register here: [Link](#)  
 Mar. 4, 2025 (2:00-3:30): Directors' Collaborative Meeting (Virtual)  
 Register here: [Link](#)

**INCLUSION CONFERENCE**

The Division of Special Education will be hosting an inclusion conference at the California Endowment Center on June 30, 2025. This conference will focus on supporting administrators in their journey to increase inclusion for our students in Los Angeles County. More information to come!

**2025 DIFFERENTIATED ASSISTANCE CONVENING**

The 2nd Annual Differentiated Assistance Convening, will take place in Pasadena, California, February 6-7, 2025. This event is for districts eligible for Differentiated Assistance, to improve outcomes for all students.

For more information or to register, click [here](#).

**RISK OF READING DIFFICULTIES SCREENER**

California is now requiring that districts use an approved Risk of Reading Difficulties Screener, starting in Fall of 2025. But you need to start selecting your screener now! Come to an informational session to learn more.

For more information click [here](#).

**2025 CHARTER SCHOOL SYMPOSIUM**

Charter schools, come join us on February 18, 2024 for the 2024-2025 Charter School Symposium. Learn systems, data and practices to help support the learning of all students.

For more information or to register, click [here](#).

**EMBRACEABILITIES**

Our EmbraceAbilities grant team is proud to be 1 of 7 Special Education Resource Leads (SERLs) within the CA Statewide System of Support. As the team strives to build capacity for the inclusion of students with extensive support needs, EmbraceAbilities is facilitating 6 strands of [Communities of Practices \(CoPs\)](#).

For more information, check out the flyers below:

- [Academic Rigor](#)
- [Behavior Support](#)
- [Early Learning](#)
- [Low Incidence](#)
- [Inclusion Mindset](#)
- [Post Secondary Education](#)

Click [here](#) for additional information on EmbraceAbilities.

**NATIONAL COALITION FOR IMPROVEMENT IN EDUCATION**

The National Coalition for Improvement in Education (NCIE) has created an interactive dashboard to analyze chronic absenteeism for your school or district.

The tool can help you determine if your school's or district's absenteeism is caused by natural fluctuations or external factors.

The tool will also compare your site/district with others in the same county.

Check out the tool [here](#).

